

LAB 3

INSTALLING WINDOWS 7

This lab contains the following exercises and activities: _____

Exercise 3.1 Installing Windows 7 from a DVD

Exercise 3.2 Joining a Workstation to a Domain

BEFORE YOU BEGIN

The lab environment consists of student workstations connected to a local area network, along with a server that functions as the domain controller for a domain called contoso.com. The computers required for this lab are listed in Table 3-1.

Table 3-1
Computers required for Lab 3

<i>Computer</i>	<i>Operating System</i>	<i>Computer Name</i>
Server	Windows Server 2008 R2	RWDC01
Workstation 1	None	NYC-CLa

NOTE

In a classroom lab environment, there will be one classroom server and the students will have workstations named using consecutive numbers in place of the a and b variables. In a virtual lab environment, each student will have three virtual machines, named RWDC01, NYC-CL1, and NYC-CL2.

In addition to the computers, you will also require the software listed in Table 3-2 to complete Lab 3.

Table 3-2
Software required for Lab 3

<i>Software</i>	<i>Location</i>
Windows 7 Enterprise installation files	DVD (provided by instructor)
Lab 3 student worksheet	Lab03_worksheet.rtf (provided by instructor)

Working with Lab Worksheets

Each lab in this manual requires that you answer questions, shoot screen shots, and perform other activities that you will document in a worksheet named for the lab, such as Lab03_worksheet.rtf. Your instructor will provide you with access to the worksheets. It is recommended that you use a USB flash drive to store your worksheets, so that you can submit them to your instructor for review. As you perform the exercises in each lab, open the appropriate worksheet file using WordPad, fill in the required information, and save the file to your flash drive.

SCENARIO

A user calls the help desk for assistance because she has completed the process of transferring user profiles from her Windows Vista workstation to her Windows 7 workstation. Now, she wants you to perform a clean Windows 7 installation on the Vista workstation, removing all traces of the old operating system.

After completing this lab, you will be able to:

- Perform a clean installation of Windows 7 from a DVD
- Join a newly installed workstation to an Active Directory Domain Services domain

Estimated lab time: 25 minutes

Exercise 3.1 Installing Windows 7 from a DVD

Overview In Exercise 3.1, you install Windows 7 on a workstation, using a standard installation DVD.

Completion time 20 minutes

NOTE

In a classroom lab environment, each student should install (or reinstall) Windows 7 on his or her own workstation, regardless of its current status. This is to ensure a clean working environment for subsequent labs.

1. Turn on the computer and immediately insert the Windows 7 installation disk into the DVD drive.
2. Press any key to boot from the DVD (if necessary). A progress indicator screen appears as Windows is loading files.
3. The computer switches to the Windows graphical interface and the *Install Windows* page appears, as shown in Figure 3-1.

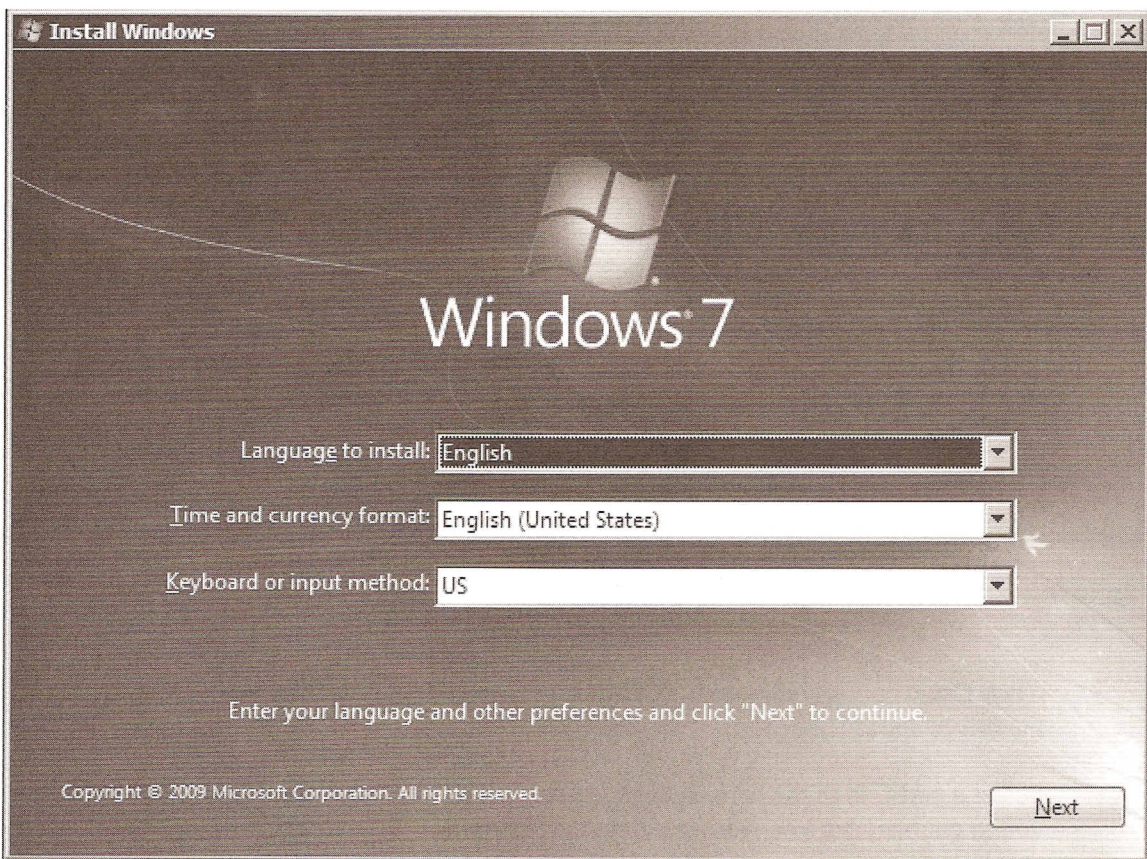


Figure 3-1
The *Install Windows* page

4. Click Next to accept the default values for the *Language to install*, *Time and currency format*, and *Keyboard or input method* parameters. The *Install now* screen appears.
5. Click Install now. The *Please read the license terms* page appears.

6. Select the *I accept the license terms* check box and click Next. The *Which type of installation do you want?* page appears.
7. Click the *Custom (advanced)* option. The *Where do you want to install Windows?* page appears, as shown in Figure 3-2.

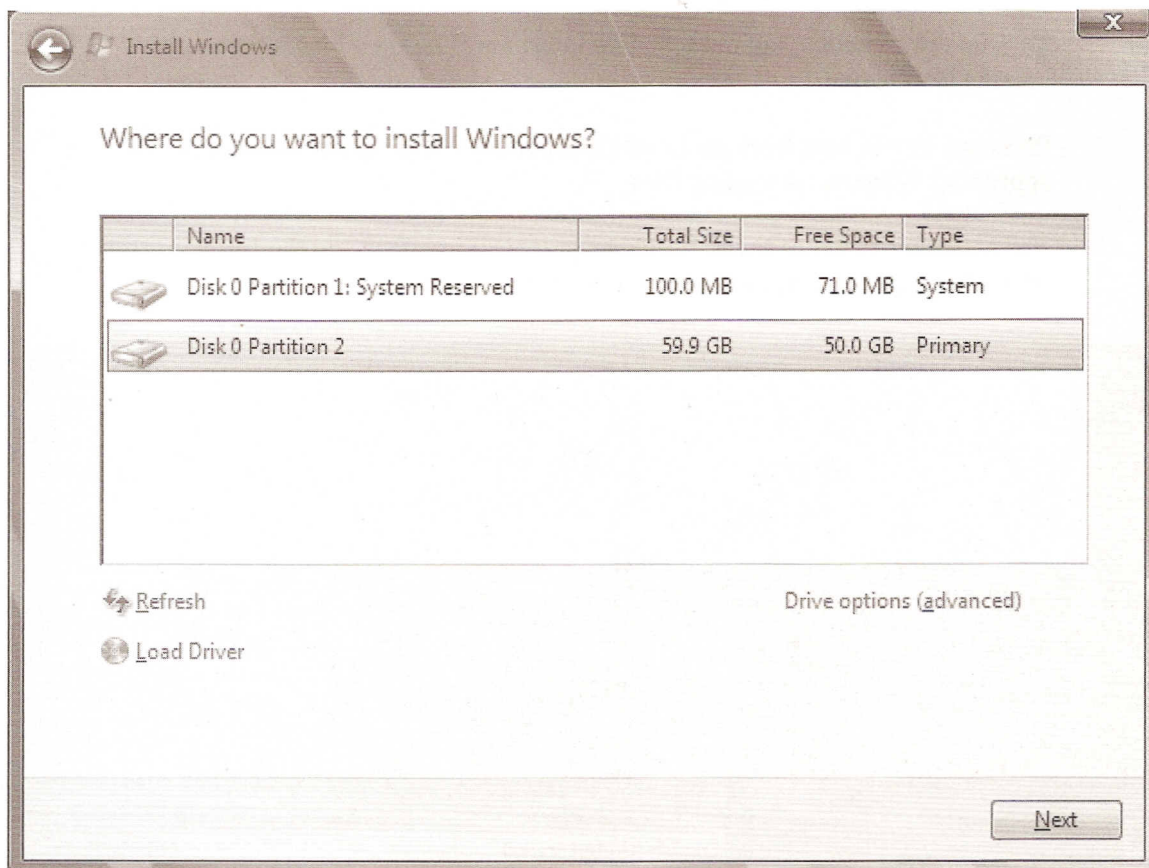


Figure 3-2
The *Where do you want to install Windows?* page

8. Click Drive options (advanced). Additional command buttons for manipulating the drives appear.
9. Select a partition in the list and click Delete. A warning box appears, prompting you to confirm that you want to delete the partition.
10. Click OK. The system deletes the partition.
11. Repeat steps 9 and 10, if necessary, to delete all other existing partitions on the computer.
12. Click New. The new partition controls appear.
13. In the Size spin box, specify a size of at least 20 GB, leaving another 20 GB of unpartitioned space on the computer.

14. Click Apply. A message box appears, specifying that Windows might have to create additional partitions.
15. Click OK. The system creates the partition you defined, as well as a 100 MB partition, as shown in Figure 3-3.

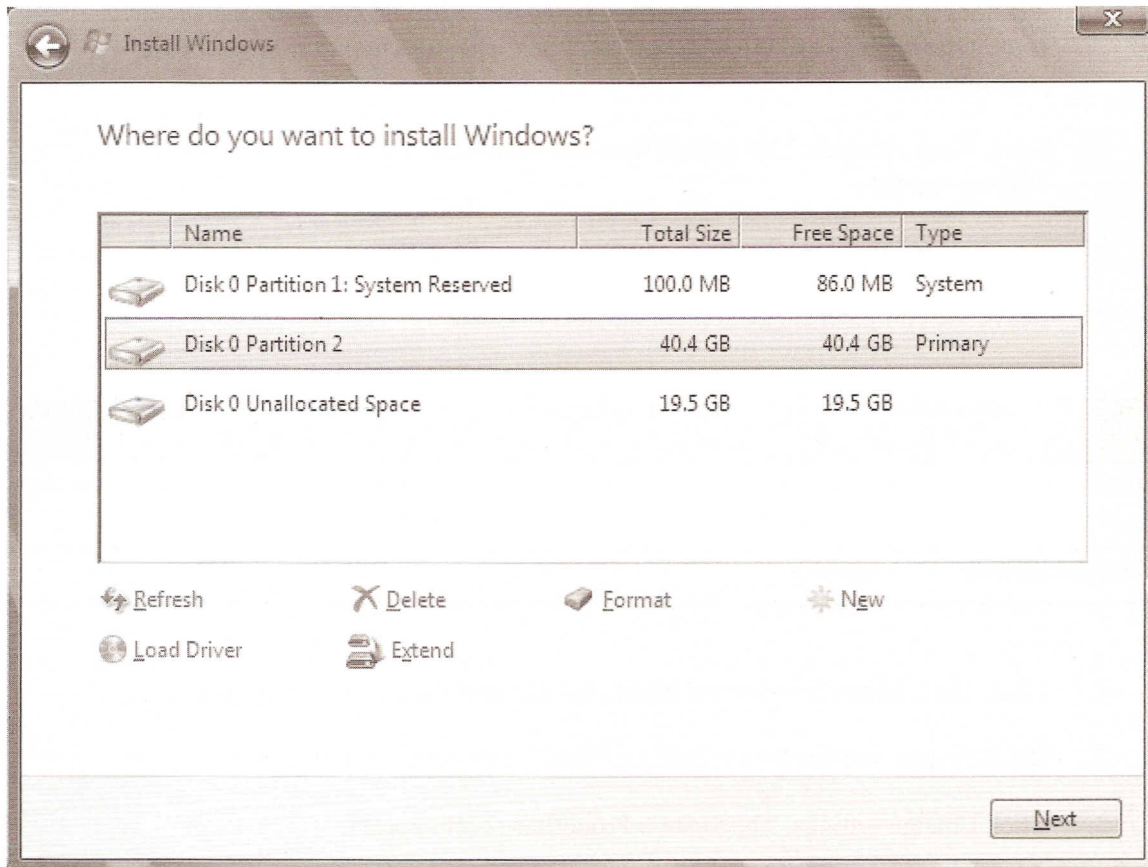


Figure 3-3
New partitions on the *Where do you want to install Windows?* page

Question
1

What types of partitions did the system create?

16. Select the larger partition you just created and click Next. The system installs Windows 7, a process that takes several minutes and requires two system restarts. Then the *Set Up Windows* page appears.
17. In the *Type a user name* text box, type **student**.
18. In the *Type a computer name* text box, type **NYC-CLa**, where a is the original number of your workstation, and click Next. The *Set a password for your account* page appears.

19. In the three text boxes, type **Pa\$\$w0rd** and click Next. The *Help protect your computer and improve Windows automatically* page appears.
20. Click Ask me later. The *Review your time and date settings* page appears.
21. From the *Time zone* drop-down list, select the correct time zone for your location. If the date and time specified in the calendar and clock are not accurate, correct the settings and click Next. The *Select your computer's current location* page appears.
22. Click Work network. The system finalizes your settings and the Windows desktop appears.
23. Remove the Windows 7 installation DVD from the drive.
24. Leave the computer logged on for the next exercise.

Exercise 3.2 Joining a Workstation to a Domain

Overview	In Exercise 3.2, you join your newly installed Windows 7 workstation to your network's Active Directory Domain Services domain.
Completion time	5 minutes

1. Click Start. Then click Control Panel. The Control Panel window appears.
2. Click System and Security > System. The System control panel appears.
3. Click Change settings. The System Properties sheet appears.
4. Click Change. The Computer Name/Domain Changes dialog box appears, as shown in Figure 3-4.

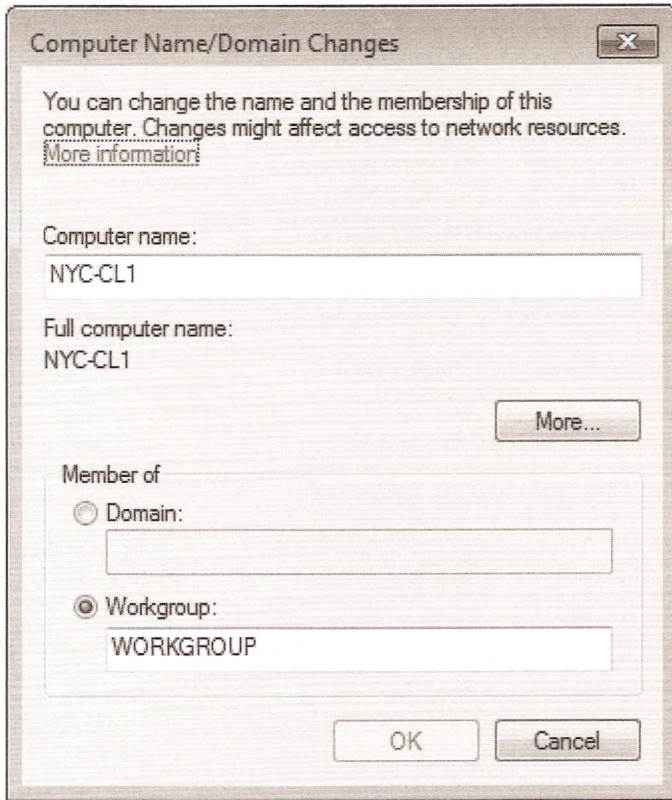


Figure 3-4
The Computer Name/Domain Changes dialog box

5. Select the *Domain* option, and type **contoso** in the text box. Then click OK. A Windows Security dialog box appears.
6. Authenticate with the user name **Administrator** and the password **Pa\$\$w0rd** and click OK. A message box appears, welcoming you to the domain.
7. Take a screen shot of the message box by pressing Alt+Prt Scr and paste it into your Lab03_worksheet file in the page provided by pressing Ctrl+V.
8. Click OK. Another message box appears, prompting you to restart the computer.
9. Click OK.
10. Click Close to close the System Properties dialog box.
11. A *You must restart your computer to apply these changes* message box appears.
12. Click Restart Now. The computer restarts.