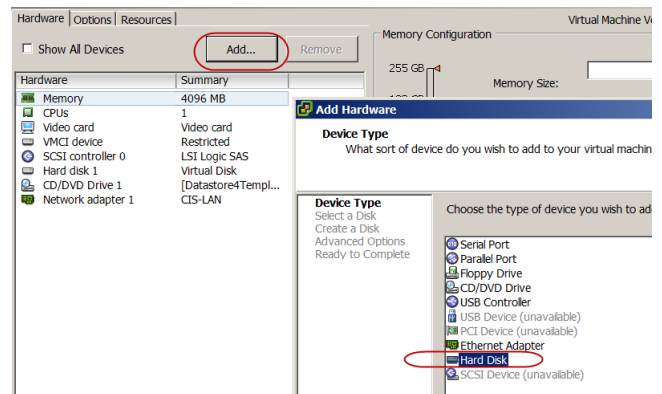
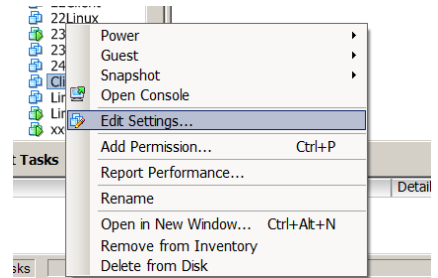


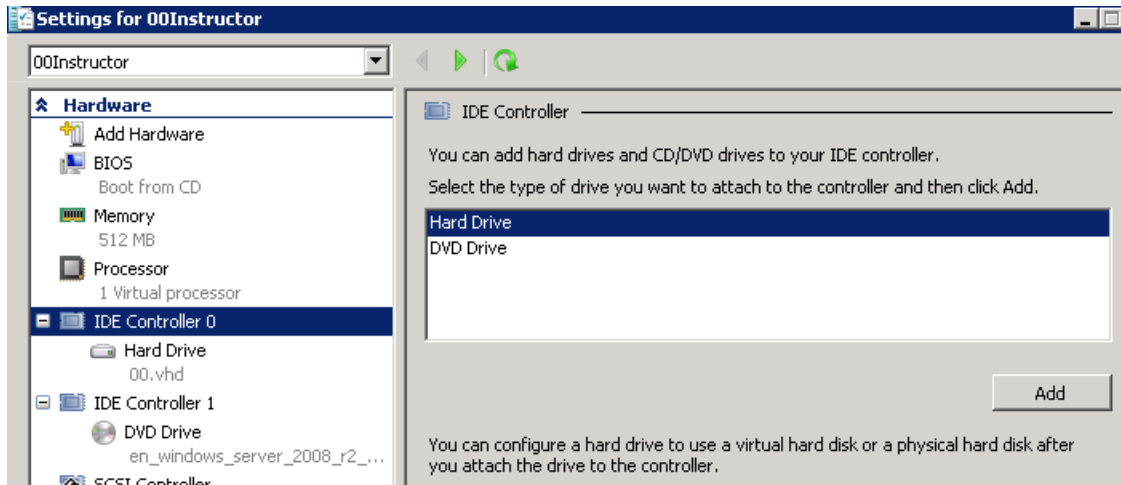
## Adding a new device to your Virtual VMWare machine

1. Turn off the machine you will be adding the device to
2. Right -click the machine, choose Edit Settings
3. Choose Add
4. Device type is Hard Disk
5. Select Create a New Virtual Disk and click next
6. Capacity is 20 GB and select Allocate and commit space on demand (Thin Provisioning) and click Next
7. Keep the default hard disk type, click next, next to complete the wizard.
8. Power on the computer and verify the hard disk is available.



## Adding a new device to your Virtual Hyper-V machine

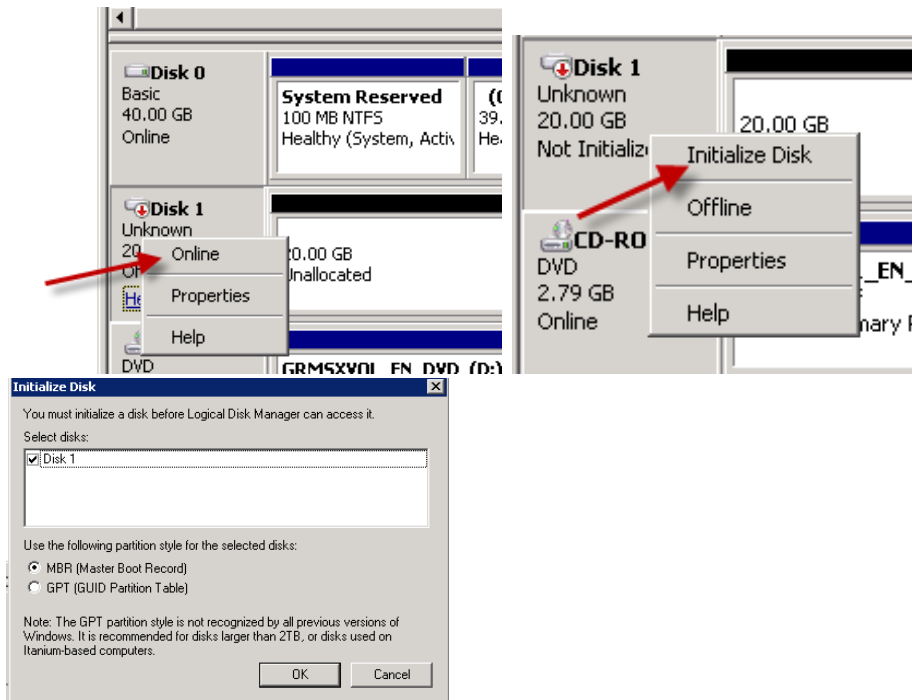
1. Turn off the machine you will be adding the device to
2. Right-click the machine, choose Settings
3. Select IDE Controller 0, in the right pane, select Hard Drive and click **Add**



4. Select New, and the hard disk wizard begins
5. Select Dynamically Expanding, choose Next.
6. Name the disk Disk2.vhd. The location of the disk must be s:\student\xx\ (replacing xx with your student number). Choose Next
7. The size of the disk should be 20 GB. Choose Next and Finish.
8. Power on the computer and verify the hard disk is available.

### Initializing the hard drive on Server 2008 R2

1. Open the Server Manager, choose Storage, Disk management
2. Right-click the new disk, select Online
3. Right-click the new disk a second time, choose Initialize Disk



Leave the defaults selected (Disk 1 & MBR), choose OK

Right-Click the unallocated space next to the new disk. Select New Simple Volume and click next three times.

Give the volume an appropriate name and perform a quick format, click Next and Finish

